

# Waste collection in the municipality of Venray

*Here in Venray, we believe it's important to handle waste in the smartest possible way. We want to prevent waste, recover more raw materials from it, and limit the amount of general waste. As a Venray resident, you can play a major role in this. This brochure tells you more about how waste is collected in our municipality.*

## Better sorting

Research has shown that our grey bins for general waste still contain too much waste that could go elsewhere. This includes food waste, paper, textiles, and plastic. Much of this waste can be reused as a raw material. Better sorting also reduces the volume of general waste left over. Incinerating this general waste is bad for the environment, and heavy taxes are imposed as a result. As such, reusing waste is better for both the environment and your wallet!

## What goes where?

Download the 'Afvalkalender Venray' app or visit [afvalkalender.venray.nl](https://afvalkalender.venray.nl) to see our waste sorting guide. This waste collection calendar also provides an overview of all collection days at your address. Switch push notifications on in the app and never miss a collection day again!



Here's how we  
do it in Venray



# Waste collection explained

## Plastic packaging, metal and drinks cartons (PMD)



### Once every two weeks

Make sure your bags are by the roadside by **7:30 AM!**

Flats and apartments:  
Once a week

PMD bags are available at supermarkets, the town hall, and the waste recycling centre



Raw materials for new products are recovered from PMD waste

**TIP!** Take your own mug or drinks bottle when you're heading out

## Vegetable, fruit and garden waste + food waste (GFT+E)



### Once a week

Make sure your bins are by the roadside by **7:30 AM!**

Flats and apartments:  
GFT+E shaft



GFT+E waste is turned into compost and biogas

**TIP!** Smell and taste whether food is still OK to use, even after the use by date

## Paper



### Once a month

Or paper collection point in your neighbourhood

Tied together or in boxes



Paper can be recycled up to seven times

**TIP!** Place a No-No sticker on your letterbox

## General waste



### Once every four weeks

Make sure your bins are by the roadside by **7:30 AM!**

Flats and apartments:  
underground skip

Pay per collection



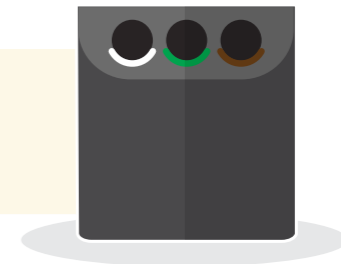
General waste is incinerated in a waste-to-energy plant

**TIP!** Take any valuable old items to a second-hand store

## Glass



### Glass recycling point in your neighbourhood



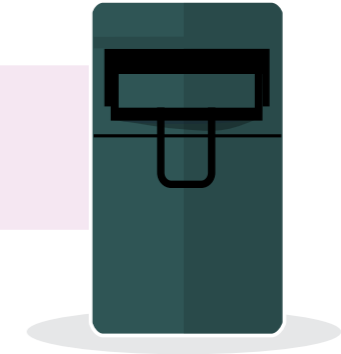
Glass is melted down to produce new glass

**TIP!** Reuse your glass jars as storage jars

## Clothing and textiles



### Textile recycling point in your neighbourhood



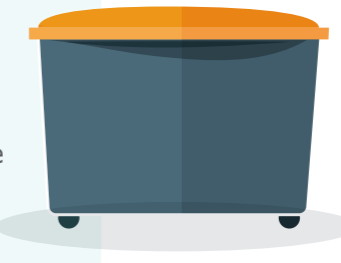
Textile fibres are reused to make new textile products

**TIP!** Buy or swap used clothing on the internet or at a second-hand store

## Nappies and incontinence pads



### Nappy collection point in your neighbourhood



Nappies are turned into plastics and biogas

**TIP!** Try modern, washable nappies

## Small electrical appliances



### Recycling points at stores



Raw materials such as metal, copper, and plastic are reused in a safe way

**TIP!** Visit a repair cafe to check whether your appliance can be repaired

## Bulky waste?

Bulky waste should be taken to the waste recycling centre. Sort your waste before you do. That way, you can make sure your waste can be reused (wood, metal, styrofoam etc.), and there will be less queueing. Visit [www.venray.nl/afval](http://www.venray.nl/afval) to see the opening times for the waste recycling centre. You can also have your bulky waste collected, subject to a fee. To schedule an appointment, call Maessen Recycling on +31 (0)478 51 31 00.

## Collection of other waste

**Cooking oil:** special collection points in your neighbourhood. Cooking oil is turned into biofuel.  
**Batteries:** collection points at stores. Precious metals are recovered from empty batteries.  
**Christmas trees:** annual collection from home or disposal at waste recycling centre. Christmas trees are turned into compost.

## Waste collection costs

Every household pays an annual waste collection levy. The municipal authority uses this money to pay for the costs of collection and processing household waste. The levy consists of a basic rate and a variable rate. The variable rate consists of all the general waste you put out added up. The better you sort your waste, the less general waste will be left over. That way, you have a direct impact on how much you pay.

At the waste recycling centre, you can dispose of all kinds of waste. Items such as: **paper - glass - textiles - nappies - PMD waste - bulk garden waste - electrical appliances** can be disposed of at the centre for free. If you wish to dispose of bulky general waste, rubble, or wood, there's a fee to pay. Don't forget to bring your waste card.

Visit [www.venray.nl/afval](http://www.venray.nl/afval) to view the latest rates.

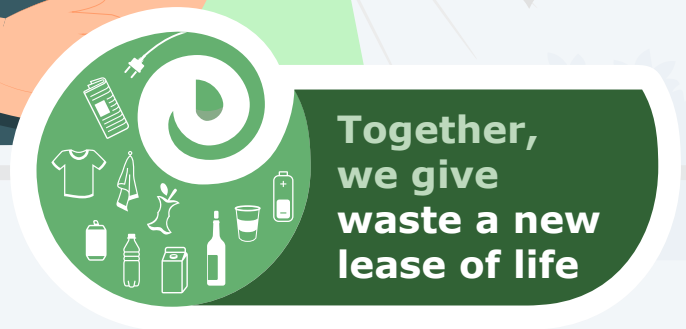
### Reusable items?

The items you no longer want might still be of use to someone else. At our second-hand stores, these items are given a new lease of life. Check your waste calendar to see all locations.

### Contact

Has your bin not been emptied?  
Has your PMD bag not been collected?  
Is your waste card or bin damaged?

Let us know via Afvalinfolijn. You can also use the Afvalinfolijn waste hotline to take care of other practical matters, such as requesting new bins or a new waste card.



[www.afvalinfolijn.nl](http://www.afvalinfolijn.nl)

+31 (0)88 - 004 63 45

Gemeente Venray 